

Dual Pressure Switching High Pressure Type
PDSJ1100/K930LDP

Working pressure & Free air delivery: 20bar, 29.7m³/min / 25bar, 25.5m³/min



Main Features

- ◆ Oil fence mounted “Leak Guard” type. Prevent as much as possible outflow of oil etc.
- ◆ Dual pressure selection feature is suitable for wide range of application such as drilling, mining, foundation, well digging and oil & gas by optimizing pressure & air flow to fulfill job requirement.
- ◆ Newly adopted touchscreen control panel with rich information for viewing and easy to operate.
- ◆ Perform auto warming up after engine is started before transferring to loading mode.
- ◆ Perform cooling down operation automatically before engine shut down.
- ◆ Equipped with Purge Operation Mode to enhance energy saving during unload operation.
- ◆ Coupled with Japan Komatsu engine which has low failure rate, stable performance and JPN Stage 3 emission standard.
- ◆ Tally with Low Noise Construction Machinery which recognized by Japan MLIT.



HOKUETSU INDUSTRIES CO., LTD.

Safety Devices

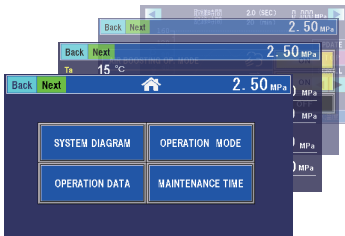
Warning Alarm

- Stage 1 , 2 discharged air temp. increase
- Oil separator discharged air temp. increase
- Ambient temp. increase
- Ambient temp. sensor open/short circuit
- Engine water temp. increase
- Oil separator pressure difference increase
- Engine air filter clogged
- Compressor air filter clogged
- Notification of filters replacement
- Fuel level low

Emergency Shutdown

- Stage 1 , 2 discharged air temp. too high
- Temperature sensors open/short circuit
- Coolant level too low
- Engine water temp. too high
- Engine oil pressure too low
- Engine speed too low
- Receiver tank pressure too high
- Oil separator discharged air temp. too high
- Fuel level too low
- Rubber coupling protection
- Starting failure

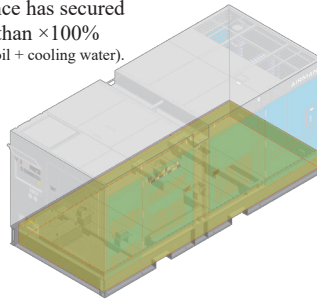
Touch Panel Display



You can check various information such as operating status, various settings, alarms, abnormalities, and failure records.

Leak Guard Type

Space capacity of the oil fence has secured more than ×100% (fuel + oil + cooling water).



Forklift slot



Easy to carry and transport.
Two-tier stacking is possible.

SPECIFICATION

Model		PDSJ1100/K930LDP-5C5	
● COMPRESSOR			
Type		Rotary Twin Screw, Two-Stages, Oil-cooled	
Operating Pressure	MPa	2.0	2.5
Free Air Delivery	m³/min	29.7	25.5
Compressor Oil Capacity	L	98	
Air Outlets		2″×1pc, 3/4″×1pc	
● ENGINE			
Maker/Model		KOMATSU SAA6D125E-5-C	
Type		Direct-injection, Turbo-charger, Intercooler	
Total Displacement	L	11.04	
Rated Output	kW(PS)/rpm	282.9 (384.6) / 2,100	
Designated Emissions Regulation		JPN Tier 3	
Fuel Tank Capacity	L	710	
Fuel economy (At 70% load)	L/hr	55.0	51.0
Lubrication Oil Capacity	L	41	
Coolant amount	L	69	
Battery		170H51×2	
● DIMENSION & WEIGHT			
Overall Length×Width×Height	mm	4,300×1,850×1,900	
	(inch)	(192.9×82.7×98.4)	
Dry Weight	kg	5,080	
Wet Weight	kg	5,850	
● Emission, Noise			
Sound power level in decibels (LwA)	dB(A)	102	

AIRMAN®

HOKUETSU INDUSTRIES CO., LTD.

8th Floor Shinjuku San-Ei Bldg,
22-2 Nishi-Shinjuku 1-Chome, Shinjuku-ku, Tokyo 160-0023 Japan
Tel: 81-3-3348-7281 Fax: 81-3-3348-7289
E-mail: airman.oversea@airman.co.jp
http://www.airman.co.jp

AIRMAN ASIA SDN. BHD.

Suite A-8-2, level 8, Block A, Sky Park @ One City,
Jalan USJ 25/1, 47650 Subang Jaya, Selangor, Malaysia
Tel: 60-3-5036-7228 Fax: 60-3-5036-7226
E-mail: sales@airman-asia.com

HOKUETSU INDUSTRIES EUROPE B.V.

Aalsmeerderdijk 156, 1438 AX Oude Meer, The Netherlands
Tel: 31-20-6462636 Fax: 31-20-6462191
E-mail: info@hokuetsu.nl

AIRMAN USA CORPORATION

95 International PKWY, Suite 100, Adairsville, GA 30103
Tel: 1-678-800-7070 Fax: 1-770-769-4335



SAFETY

- Operate safely in accordance with proper operation manual.
- To prevent trouble and accidents, perform daily and preventive maintenance checks without fail.



ISO9001 : JQA-0581
ISO14001 : JQA-EM4670