

HYBRID ENERGY SOLUTION



CAPS HYBRID GENSET - BES16S

BATTERY/PV/DIESEL GENERATOR/GRID

BES series hybrid energy genset is composed of photovoltaic, battery and a diesel generator. It's suitable for variable load, sudden load, long-term low power operation and other conditions. Saves fuel consumption, reduces cost and protects the ecological environment. It's used in renting, construction, mining, events, emergency, UPS, peak power supply and more.

FEATURES

- Smart energy management system
- AC/DC power conversion system
- PV charging system
- LiFePO4 air-cooled battery pack
- RCD leakage protector
- Plug and play interface
- Leak- proof large capacity tank
- Super-silent structure
- Remote cooling system
- Fire safety system

INTELLIGENT ENERGY MANAGEMENT

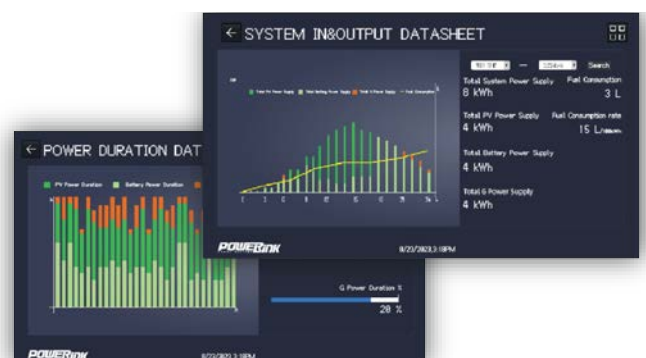


Switch the control mode with one button.

Hybrid mode: through smart scheduling and distribution, powered by PV system, battery system, diesel generation system individually or in combination.

Battery mode: Powered by PV system and battery system.

Flexible generation of daily, monthly and annual operation data reports, allows users to adjust the system control strategy, according to economic benefits.



SPECIFICATIONS

BES16S HYBRID ENERGY SYSTEM

Rated power (kVA/kW)	16/16
Frequency (Hz)	50
Phase (P)	1
Power factor (PF)	1
Noise level (hybrid) dBA@7m	58
Noise level (battery) dBA@7m	50
Voltage (AC V)	220/230/240
Current (A)	73/ 70/ 67

PV SYSTEM

MPPT rated power (kWp)	21
Rated voltage (DC V)	150-425
Solar panel voltage (DC V)	250
Solar panel capacity (kWp)	2.5

GRID INPUT

Weight Empty (kg)	1800
-------------------	------

BATTERY SYSTEM

Battery type	LiFePO4
Battery capacity (kWh)	30
Battery voltage (DC V)	40-60
Max charging rate	1C
Max discharging rate	1C
Recommended discharging rate.	1C

DIESEL GENERATION SYSTEM

Engine brand/model	Kubota/D1803
Rated power (kVA/kW)	18/14
Rated voltage (AC V)	240
Fuel Tank Capacity (L)	200

LOGISTICS DATA

External Dimensions (mm)	2100x1150x1700
Dry Weight (kg)	1200
40" Loading (Qty)	4335

CERTIFICATION STANDARDS

- UN 38.3
- AC/DC power conversion system
- IEC 62619
- PV charging system
- IEC 62477
- LiFePO4 air-cooled battery pack
- IEC 62933-2-1

ALSO AVAILABLE IN THE RENTAL FLEET

CAPS SOLAR PANEL FRAMES

A kit that can be easily installed on top of containers or remote worksite structures with flat roofs. Allowing the production of power and provides electrical energy for the transportable building.

SPECIFICATIONS

PV module technology	Monocrystallin
Numbers of modules	6 and 12
Module power	Minimum 370WP
Total power	2.2 or 4.4 kWp
Technology used	On-grid or fully off-grid
Electrical Box	In or off-grid batteries can be supplied on request



1800 800 878
caps.com.au
rental@caps.com.au

