

# 2025 CAPABILITIES



**COMPLETE AIR  
& POWER SOLUTIONS**



# COMPLETE AIR & POWER SOLUTIONS

CAPS Australia is a leading provider of power generation, compressed air and gas generation solutions, boasting an extensive portfolio of products and brands.

## WHO IS CAPS AUSTRALIA?

- More than **four decades of experience** in the Australian market.
- **10 branches** around Australia with **over 200 employees**.
- **60 service technicians** covering the full national footprint, with a **24/7 service** offering.
- A vast inventory of **spare parts**.
- The flexibility to search globally for the best products and technologies that serve the **Australian market's needs**.
- World-renowned partner brands such as Ingersoll Rand, AIRMAN, Mitsubishi Generator Series and more.
- Custom design, engineering, manufacturing, supply and service.
- Operating under an ISO 9001 accredited quality system.

## WHO DO WE SERVE?

- Mining
- Manufacturing
- Industrial
- Commercial
- Data centres
- Public and private utilities
- Waste & water treatment plants



# GLOBAL NETWORKS

## BACKED BY LOCAL KNOWLEDGE & EXPERIENCE

Founded in Western Australia in 1980, CAPS joined the Ingersoll Rand family in 2024.

Ingersoll Rand is a global market leader offering a broad range of innovative and mission-critical air, fluid, energy, and medical technologies, enhancing industrial productivity and efficiency.

By utilising quality products with proven reliability where and when they are needed, CAPS' extensive range of industrial equipment features world-renowned brands and means customers have full access to the latest technology, suited to Australian operating environments.



# ENGINEERING EXCELLENCE & MANUFACTURING SKILLS

**CAPS' industry experience means the team can accurately assess your needs and provide the right power generation and air solutions.**

We understand that reliability is crucial - that's why CAPS can custom engineer anything, anywhere, to relevant specifications, in required timeframes and in adherence to Australian industry standards.



Drawing upon our expertise and global partners, we have worked closely with many customers to design and deliver complex project packages that involve end-to-end design as well as the engineering, supply, installation and commissioning.

We offer precision engineered, robust and rugged industrial solutions that meet your technical, quality and documentation requirements.

This is overseen by our in-house engineering department and testing facility, certified ISO9001:2015 quality assurance system.



**Competitively priced, turnkey solutions that keep your operations running smoothly.**

We offer short and long-term rental of compressors and generators across Australia, ideal for your projects, seasonal demand and any breakdown requirements. And provides flexibility to suit your needs.

With vast experience in renting equipment to contracting, industrial and mining companies, CAPS has a large fleet of units available for dispatch from our local hubs.

The site ready solutions satisfy a wide range of applications and ensure quality equipment is available, backed with a high standard of customer service.





### MAXIMISE YOUR OPERATION

CAPS Care takes care of your equipment, allowing you to focus on optimising your operation while we ensure it runs smoothly.

It consists of a range of diagnostic and service maintenance programs called **Planned Care**, **Package Care**, **Parts Care** and **Performance Care**.

Each program delivers specific features, from extended warranty and scheduled maintenance to providing a consistent supply of parts, as they are required. Each program puts your operation in a position to succeed, because when you succeed, we do too.

With 10 branches nationwide, CAPS' dedicated team delivers exceptional service, expert advice, support and spare parts.

The national footprint means CAPS is working in the same time zones as its clients and are on hand to support customers through the entire process, from understanding their requirements, offering suggestions and providing advice, to ultimately delivering the solutions they need.



## 24/7 NATIONWIDE SUPPORT

### SAFETY COMPLIANCE

Safety is a core value of CAPS and our goal is to never put people, plant or the environment at risk. You can be confident that our technicians will be compliant to any site specific safety requirements you have to ensure your operations are both safe and efficient.



### HIGHLY TRAINED TECHNICIANS

CAPS' technicians' knowledge and practical skills are continually updated. So whether you have one generator or have complex systems with multiple pieces of equipment, our technicians will give you the advice you need to ensure continuous operation.

### PREVENTATIVE MAINTENANCE

CAPS is always aiming to help you to reduce operating costs and interruptions to your production.

Our factory-authorised programs include routine inspections, condition monitoring and the use of specialised diagnostic equipment to identify any potential problems before they impact you.





**CAPS Australia is proud to be the exclusive Australian distributor of Ingersoll Rand air compressors and tools.**

Our exclusive rights to Ingersoll Rand's range makes CAPS a one-stop location for all IR air compressor products and spare parts in Australia.



Ingersoll Rand is a global market leader with a broad range of innovative and mission-critical air, fluid, energy and medical technologies, providing services and solutions to increase industrial productivity and efficiency.

CAPS has formed dedicated teams to service, support and deliver the different types Ingersoll Rand equipment.

CAPS also offers Ingersoll Rand's huge selection of heavy-duty air tools and drills.



# AIRMAN

**CAPS is partnered with Airman as an Australian distributor.**

Airman is one of the world's largest manufacturers of diesel compressors and generators.

Airman's reputation for durability has made it Australia's top selling box style diesel compressor.

Designed, engineered and manufactured in Japan, the Airman range of portable power generators are renowned for their precision engineering, reliability and fuel efficiency.

When it comes to providing air compressors and generators to support farming and industrial



operations, Airman provides the flexibility, efficiency and support you need.

Ideal for mounting on trucks, utilities and trailers, Airman box type compressors that are specifically designed for continuous performance despite heavy duty outdoor work.

CAPS also delivers an Australian-built trailer assembly maximising the portability of the units.

With a range of well-considered, standard features, plus a host of available accessories, the Airman has proven itself ideal for rental, blasting, construction, mining & more environments.

## PARTNER BRANDS



Blower manufacturer

**SPXFLOW**

Compressed air dryers and filtration equipment



BOLL & KIRCH provides industrial filters



PSA oxygen and nitrogen generators



Gas separation technology



Compressed air preparation



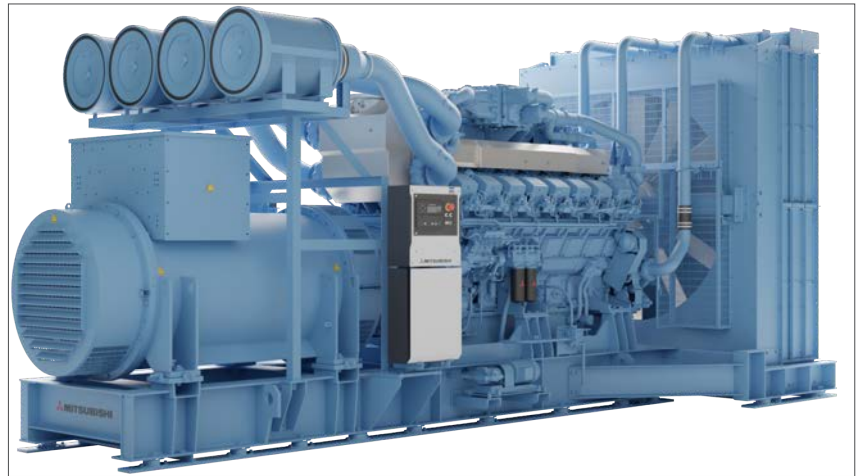
# MITSUBISHI GENERATOR SERIES

**CAPS is partnered with Mitsubishi Heavy Industries Engine System Asia (MHIES-A) as the exclusive authorised Australian distributor.**

Mitsubishi Heavy Industries diesel engines, are meticulously crafted in Japan to deliver outstanding performance, fuel efficiency, and reduced emissions.

World-renowned for its reliability, efficiency and robust performance in providing power solutions for various industries and applications, a significant advantage of the Mitsubishi Generator Series (MGS) lies in the use of Mitsubishi Heavy Industries diesel engines.

The MGS-R Series, ranging from 385kva to 3025 kVA (kilovolt-amperes), emerges as an indispensable



component in powering mission-critical systems for mining operations, data centres and essential infrastructure.

Designed for outstanding performance, fuel efficiency, and reduced emissions, the MGS -R Series ensures combination of cost-effectiveness and environmental sustainability.



**NexTurbo**

Blower manufacturer



**Sauer Compressors**

Medium and high-pressure air compressors



**LeROI**

Compressed gas systems



**Filtrations-Separations-Technik**

Air and gas treatment



Dryers, filters, aftercoolers and accessories

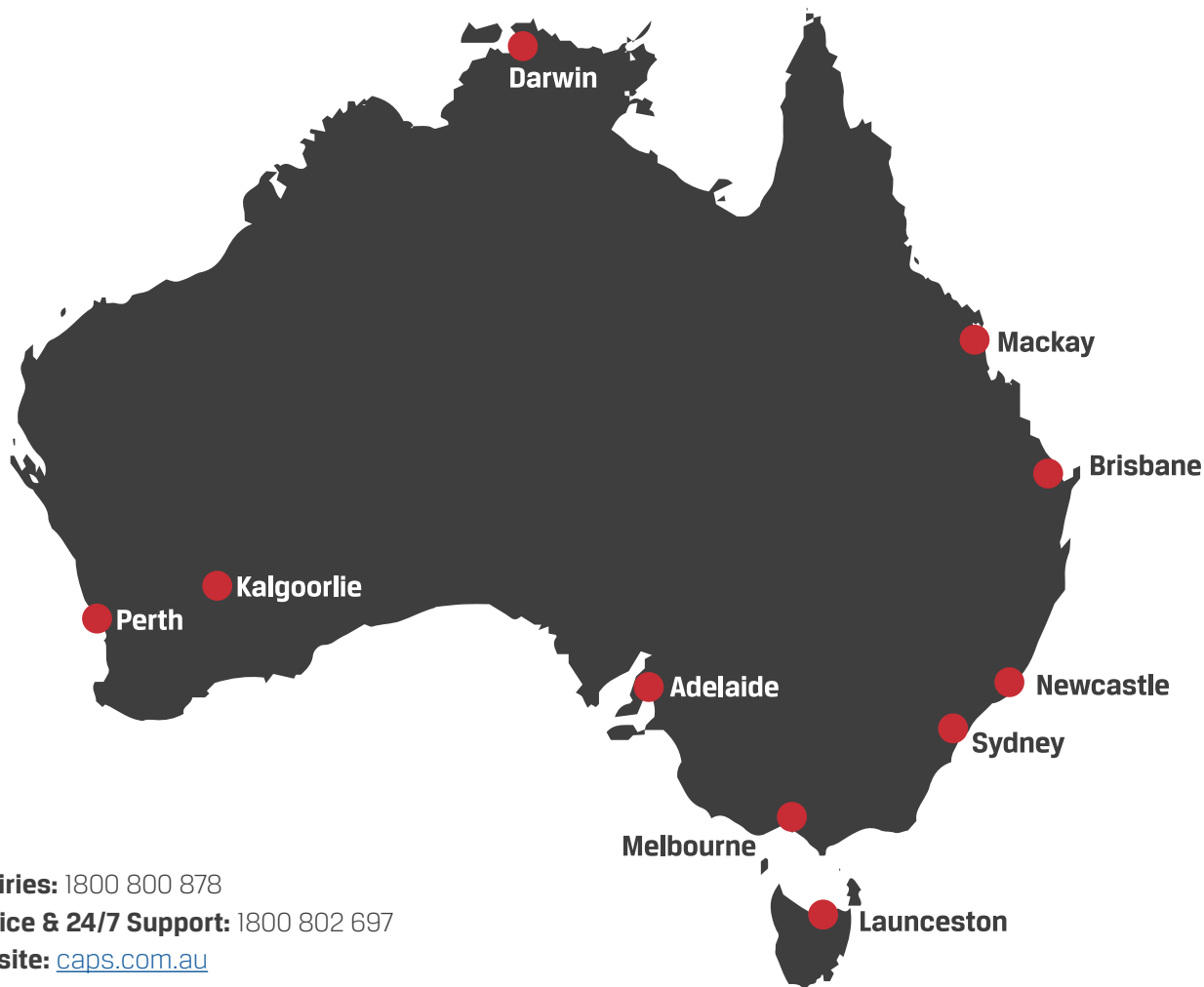


Generators  
(previously known as KOHLER)



# SOLVING YOUR AIR AND POWER CHALLENGES

10 BRANCHES SERVICING ALL OF AUSTRALIA



**Inquiries:** 1800 800 878

**Service & 24/7 Support:** 1800 802 697

**Website:** [caps.com.au](https://caps.com.au)

**Shop:** [capsshop.com.au](https://capsshop.com.au)

**Email:** [info@caps.com.au](mailto:info@caps.com.au)

## BRANCH LOCATIONS

PERTH (HEAD OFFICE) | KALGOORLIE | DARWIN | MACKAY | BRISBANE | NEWCASTLE | SYDNEY |  
LAUNCESTON | MELBOURNE | ADELAIDE |

